

iGRiP[®] STUD

SNOWMOBILE



This document has been elaborated to assist our clients in choosing the proper stud for their specific snowmobile track, the right quantity to buy and the installation instructions. You will also find our suggested installation patterns for each specific track.

If you cannot find your specific track in this document, please contact us and we will do our best to provide you with the help you need.

These installation patterns are only suggestions. Furthermore, it is wise to always check where your tunnel protectors are situated so as to avoid placing studs directly beneath them, thus avoiding damage.

We have also added additional information to help you determine the proper amount of iGRiP studs required and to identify what is the best stud to choose according to your specific usage.

TABLE OF CONTENT

<u>CHOOSING THE RIGHT TYPE OF IGRIP STUD</u>	<u>3</u>
<u>CALCULATING THE STUDS REQUIRED</u>	<u>4</u>
<u>BACKCOUNTRY</u>	<u>5</u>
<u>CHARGER</u>	<u>7</u>
<u>COBRA 1.352</u>	<u>8</u>
<u>COBRA SWT 1.5 PRE-DRILLED</u>	<u>9</u>
<u>COBRA SWT 1.5-1.75</u>	<u>10</u>
<u>COBRA WT 1.5-1.8 PRE-DRILLED</u>	<u>11</u>
<u>COBRA WT 1.5</u>	<u>12</u>
<u>COBRA 1.6 PRE-DRILLED</u>	<u>13</u>
<u>HACKSAW</u>	<u>14</u>
<u>HURRICANE 175</u>	<u>15</u>
<u>RIPSAW 1</u>	<u>16</u>
<u>RIPSAW 1.25</u>	<u>17</u>
<u>RIPSAW II 1-1.25</u>	<u>18</u>
<u>RIPSAW II 1.5</u>	<u>19</u>
<u>SILENT DRIVE 1.25</u>	<u>20</u>
<u>STORM 150</u>	<u>21</u>

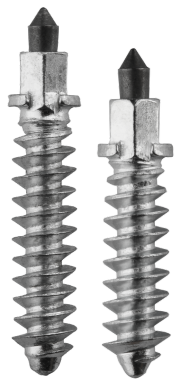


CHOOSING THE RIGHT TYPE OF IGRIP STUD

What type of snowmobiler are you? Whether you be a pleasure seeker who is looking for increased traction and security in the trails or a rip shedding nut job on a quest for high performance aggressive traction, we've got you covered.

Whether you have an old and worn track or a brand new one, iGRiP has a stud to suit your need. These studs offer you the advantage of being silent, cost effective and very easy to install. Being light weight, they won't add excessive weight to your track and being deeply threaded into the lugs rubber, they pose little to no danger to coolers as they rarely come out. These studs will provide you with an increased feeling of stability, control and security in all situations, icy or not.

Our Standard Studs, ST models, provide better all around traction especially in strategic areas of the trail such as curves and ice patches. They provide security, traction and overall increased performance and durability.



Our Shouldered Studs, the SS models, on the other hand are designed for aggressive riding on all trail and ice surfaces for the high performance enthusiasts.

****Attention:** the SS models are not recommended for the Cobra 1.352 and Ripsaw II tracks as they are too narrow and flexible. See our recommendations.

Here we see a photograph of our ST vs SS models once installed.

**ST19R / ST20R
ST24R**



SS28R / SS32R

CALCULATING THE STUDS REQUIRED

If your track is not included in this guide, you must know certain basic information about your specific track in order to calculate the quantity of studs you will need. The **length** and the **model** of your track are what you need to know. If you ignore what track you have, you can find details either on Internet or your local snowmobile dealer.

** Please note that we provide in this document charts which include all these details for specific tracks.

By dividing the length of the track by the pitch you obtain the number of rows on your track. The graph below is provided to help you determine the number of rows quickly.

So according to the pattern chosen, you can now determine the number of studs required.

LENTGH	DRIVE PITCH			
	2.52	2.86	3.00	3.50
120		42		
121	48			
128	51			
129		45		
136	54			
137		48		
141			47	
144	57			
146		51		
151	60			
153			51	
154		54		
154				44
156			52	
162			54	
163		57		
165				47
174			58	
175				50

For example, if your track is 137" long, having a drive pitch of 2.86", by dividing 137 by 2.86 we obtain 48 rows.

If now you choose to put 4 studs per row, $48 \times 4 = 192$ iGRiP studs. If you change your pattern to 5-4-4, which is an average of 4.3 studs per row $\times 48 = 208$ iGRiP studs.

BACKCOUNTRY

For this track, we suggest you use the **ST-24R** [standard], whereas if you prefer a more aggressive stud, the **SS-28R** [soft profile] or the **SS-32R** [firm profile] can be used.

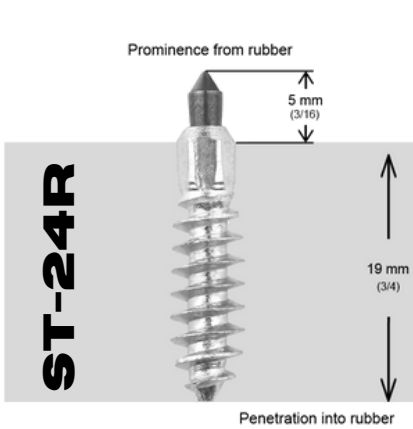
On the images below, the grey zone represents a profiled view of the track lug and the iGRiP studs correct insertion into the rubber. You can watch our installation videos on our YouTube channel iGRiPStud:

[Installation Video ST-24R](#)

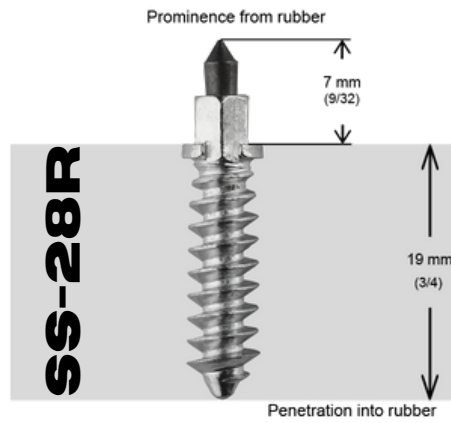
[Installation Video SS-28R](#)

[Installation Video SS-32R](#)

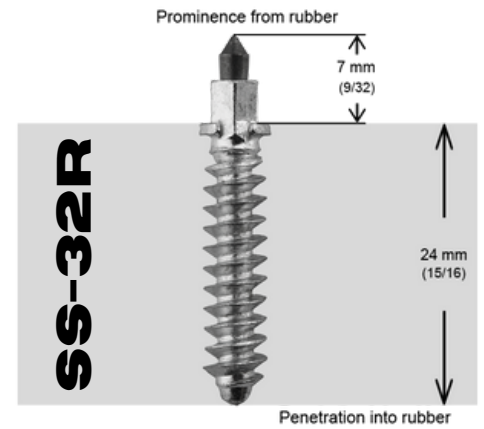
ST-24R



SS-28R

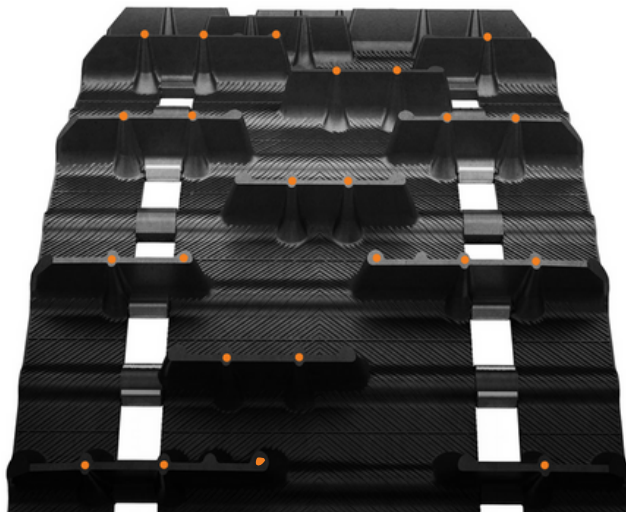


SS-32R



BACKCOUNTRY 1.75"

PATTERN 4-2-4-2-5-2



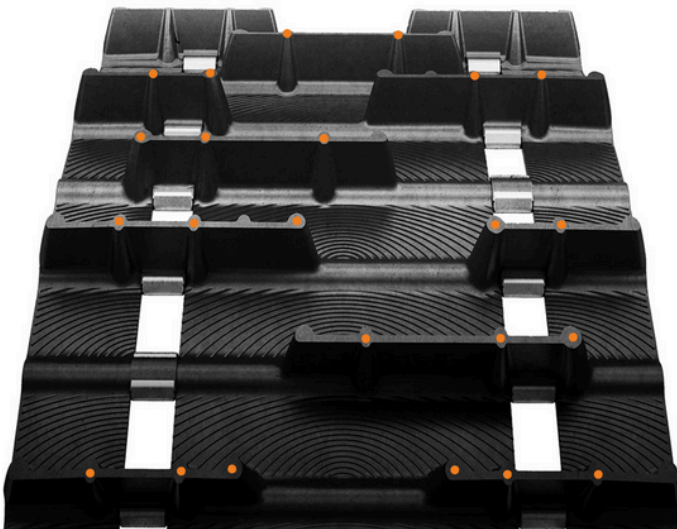
- Pilot drill rubber with 3/32" drill bit x 3/4" deep
- Lug patterns on this track repeat every 6 rows so repeating the exact chosen placement pattern per row is crucial.
- Patterns are only suggestion. Make sure studs are not placed directly in line with the tunnel protectors.
- Installation of tunnel protectors is always recommended

MODEL	LENTGH	WIDTH	LUG	PITCH	ROWS	STUDS
	IN	IN	IN	IN		PCS
9140C	121	15	1.75	2.52	48	152
9141C	128	15	1.75	2.52	51	162
9142C	136	15	1.75	2.52	54	171
9143C	144	15	1.75	2.52	57	181

BACKCOUNTRY

BACKCOUNTRY X 1.75"

PATTERN 2-4-3-5-3-6

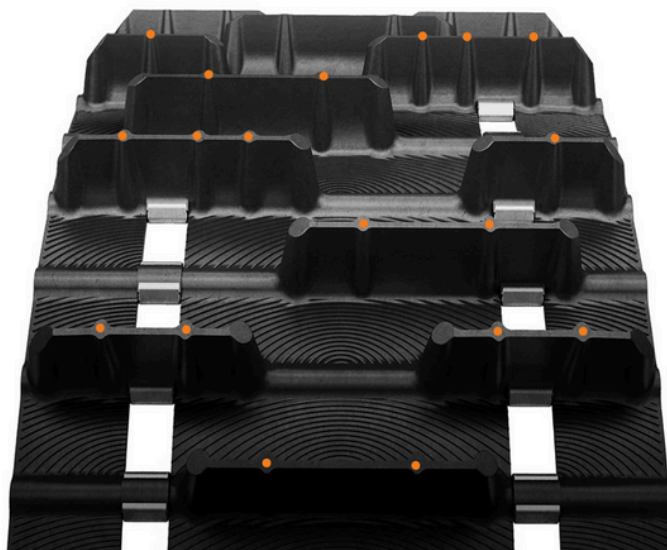


- Pilot drill rubber with 3/32" drill bit x 3/4" deep
- Lug patterns on this track repeat every 6 rows so repeating the exact chosen placement pattern per row is crucial.
- Patterns are only suggestion. Make sure studs are not placed directly in line with the tunnel protectors.
- Installation of tunnel protectors is always recommended

MODEL	LENTGH	WIDTH	LUG	PITCH	ROWS	STUDS
	IN	IN	IN	IN		PCS
9254C	141	15	1.75	3	47	180
9287C	120	15	1.75	2.86	42	161
9288C	129	15	1.75	2.86	45	172
9289C	137	15	1.75	2.86	48	184
9328C	153	15	1.75	3	51	195

BACKCOUNTRY X2 2"

PATTERN 4-2-4-2-4-2



- Pilot drill rubber with 3/32" drill bit x 3/4" deep
- Lug patterns on this track repeat every 6 rows so repeating the exact chosen placement pattern per row is crucial.
- Patterns are only suggestion. Make sure studs are not placed directly in line with the tunnel protectors.
- Installation of tunnel protectors is always recommended

MODEL	LENTGH	WIDTH	LUG	PITCH	ROWS	STUDS
	IN	IN	IN	IN		PCS
9258C	137	15	2	2.86	48	144
9417C	146	15	2	2.86	51	153

CHARGER 1.5"

PRE-DRILLED

Seeing as the lugs on this track are pre-drilled, we suggest using the **ST-25R** [standard], whereas if you prefer a more aggressive stud, the **SS-28R** [soft profile] or the **SS-32R** [firm profile] can be used.

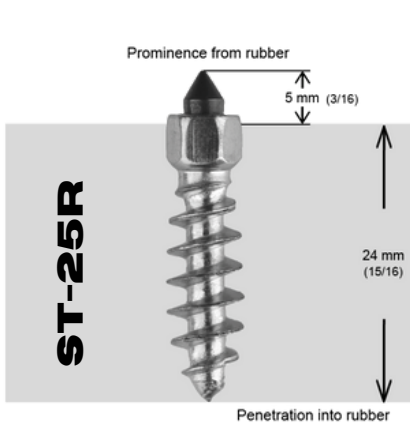
On the images below, the grey zone represents a profiled view of the track lug and the iGRiP studs correct insertion into the rubber. You can watch our installation videos on our YouTube channel iGRiPStud:

[Installation Video ST-25R](#)

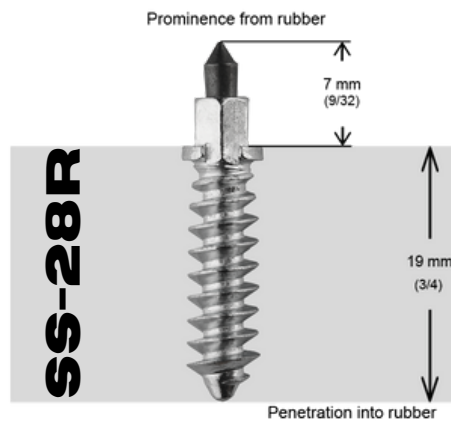
[Installation Video SS-28R](#)

[Installation Video SS-32R](#)

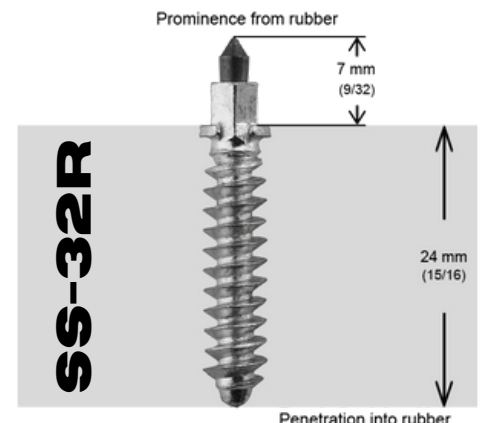
ST-25R



SS-28R



SS-32R



CHARGER 1.5"

PATTERN 6-4-6-3



- Lug patterns on this track repeat every 6 rows so repeating the exact chosen placement pattern per row is crucial.
- Patterns are only suggestion. Make sure studs are not placed directly in line with the tunnel protectors.
- Installation of tunnel protectors is always recommended

MODEL	LENTGH	WIDTH	LUG	PITCH	ROWS	STUDS
	IN	IN	IN	IN		PCS
CHARGER	154	16	1.5	2.86	54	198

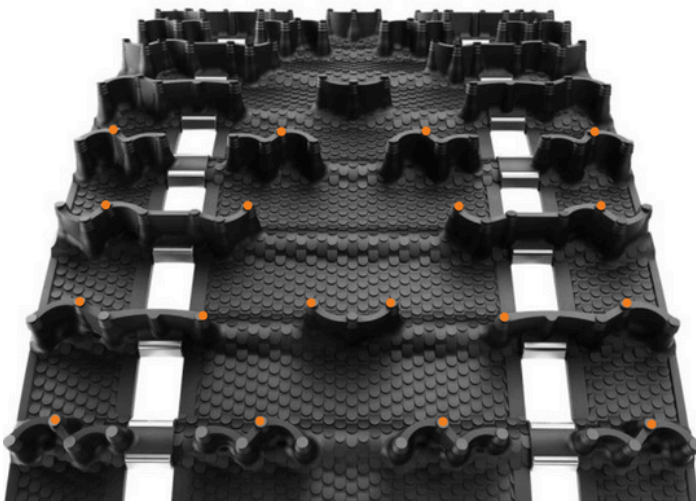
COBRA 1.352

This track is equipped with narrower and more flexible lugs.

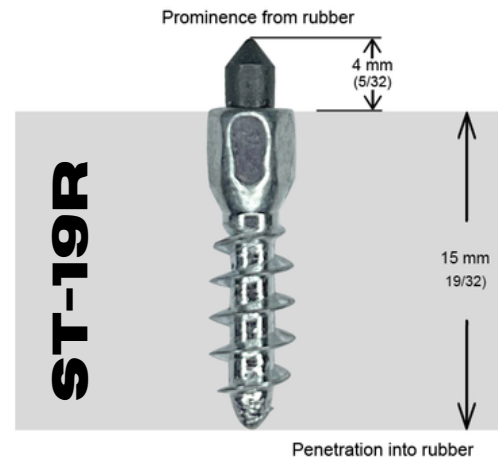
For this track we suggest using the iGRiP **ST-19R** which is specifically designed for the narrower lugs.

For the stud shown below, the grey area represents the lug of the track and the stud must be installed as shown. You can watch our installation video on our YouTube channel iGRiPStud : [Installation Video of iGRiP ST-19R](#)

COBRA 1.352"



ST-19R



- Pilot drill rubber with 3/32" drill bit x 1/2" deep
- The lug pattern repeats every 3 rows, so it is important to repeat the stud pattern every 3 rows.
- Make sure studs are not placed directly in line with tunnel protectors.
- Installation of tunnel protectors is always recommended.
- While doing routine maintenance, verify that the studs are consistently at the right depth. If not, screw in deeper until just right.

MODEL	LENTGH	WIDTH	LUG	PITCH	ROWS	STUDS
	IN	IN	IN	IN		PATTERN 4-6-4
9052H	121	15	1.352	2.52	48	224
9061H	136	15	1.352	2.52	54	252
9107H	144	15	1.352	2.52	57	266
9120H	146	15	1.352	2.86	51	238
9235H	129	15	1.352	2.86	45	210
9284H	120	15	1.352	2.86	42	196
9307H	137	15	1.352	2.86	48	224

COBRA SWT 1.5

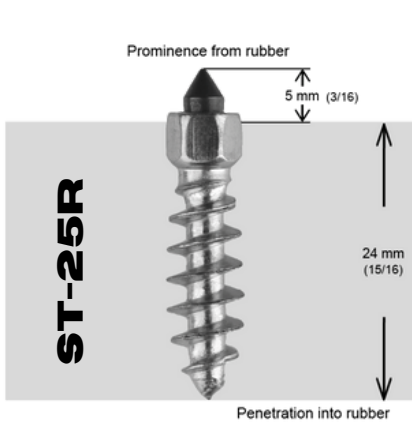
PRE-DRILLED

Seeing as the lugs on this track are pre-drilled, we suggest using the **ST-25R** [standard], whereas if you prefer a more aggressive stud, the **SS-28R** [soft profile] or the **SS-32R** [firm profile] can be used.

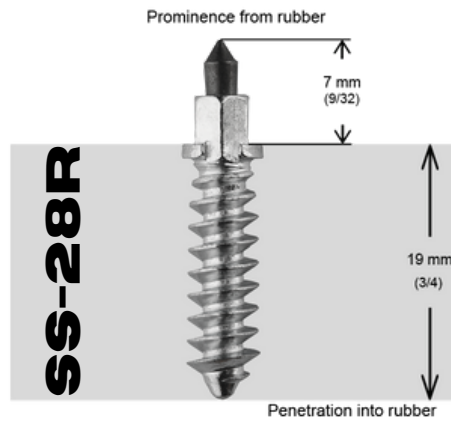
On the images below, the grey zone represents a profiled view of the track lug and the iGRiP studs correct insertion into the rubber. You can watch our installation videos on our YouTube channel iGRiPStud:

[Installation Video ST-25R](#) [Installation Video SS-28R](#) [Installation Video SS-32R](#)

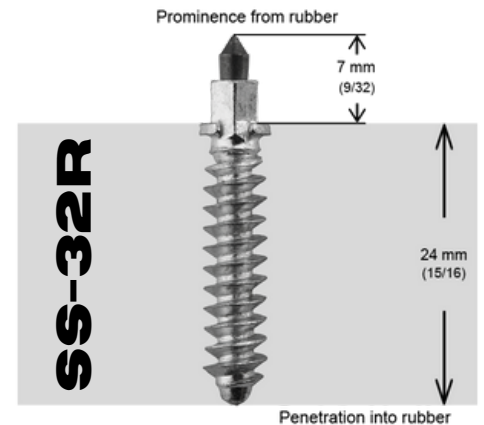
ST-25R



SS-28R

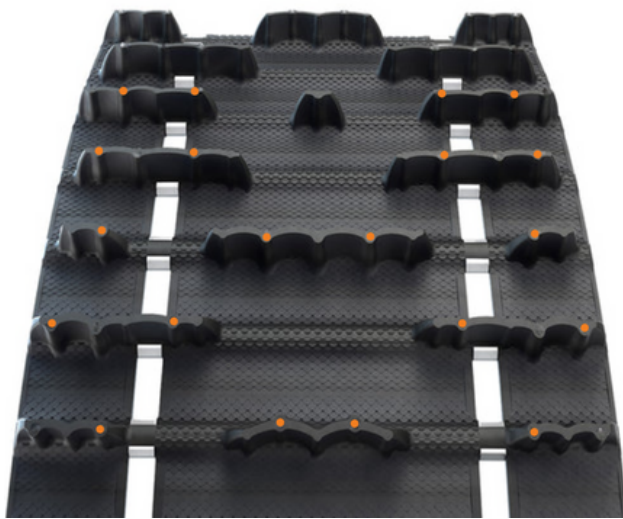


SS-32R



COBRA SWT 1.5"

PREDRILLED HOLE / PRÉ-PERÇÉE



- Lug patterns on this track repeat every 6 rows so repeating the exact chosen placement pattern per row is crucial.
- Patterns are only suggestion. Make sure studs are not placed directly in line with the tunnel protectors.
- Installation of tunnel protectors is always recommended

MODEL	LENTGH	WIDTH	LUG	PITCH	ROWS	STUDS
	IN	IN	IN	IN		PCS
9422U	154	24	1.5	2.86	54	216

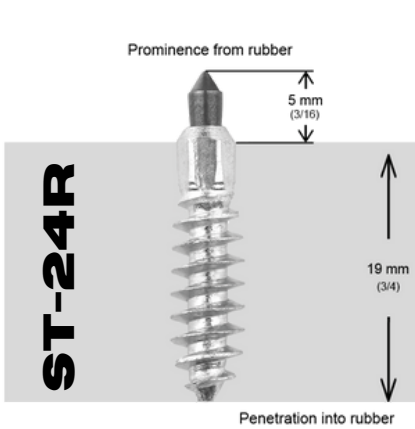
COBRA SWT 1.5"-1.75"

For this track, we suggest you use the **ST-24R** [standard], whereas if you prefer a more aggressive stud, the **SS-28R** [soft profile] or the **SS-32R** [firm profile] can be used.

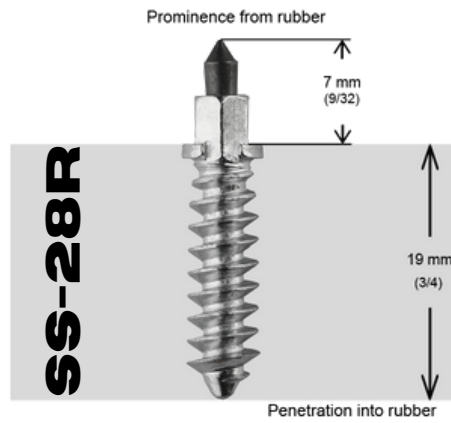
On the images below, the grey zone represents a profiled view of the track lug and the iGRiP studs correct insertion into the rubber. You can watch our installation videos on our YouTube channel iGRiPStud:

[Installation Video ST-24R](#) [Installation Video SS-28R](#) [Installation Video SS-32R](#)

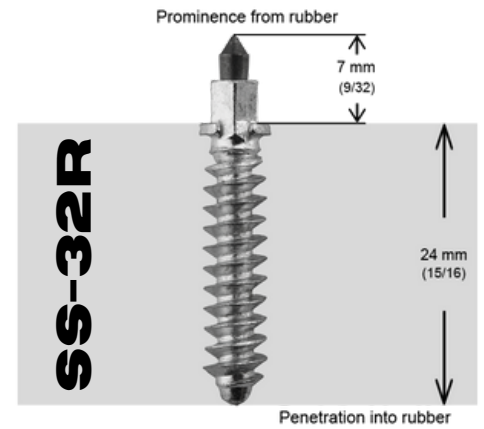
ST-24R



SS-28R



SS-32R



COBRA SWT 1.5"-1.75"



- Pilot drill rubber with 3/32" drill bit x 3/4" deep
- Lug patterns on this track repeat every 6 rows so repeating the exact chosen placement pattern per row is crucial.
- Patterns are only suggestion. Make sure studs are not placed directly in line with the tunnel protectors.
- Installation of tunnel protectors is always recommended

MODEL	LENTGH	WIDTH	LUG	PITCH	ROWS	STUDS
	IN	IN	IN	IN		PCS
9261U	156	24	1.5	2.52	62	248
9260U	156	24	1.75	2.52	62	248

COBRA WT 1.5

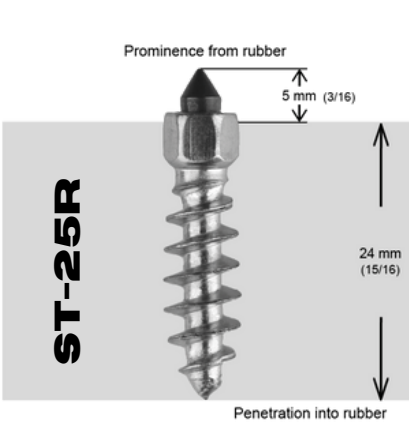
PRE-DRILLED

Seeing as the lugs on this track are pre-drilled, we suggest using the **ST-25R** [standard], whereas if you prefer a more aggressive stud, the **SS-28R** [soft profile] or the **SS-32R** [firm profile] can be used.

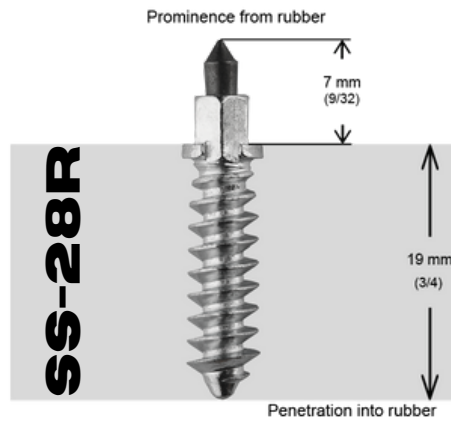
On the images below, the grey zone represents a profiled view of the track lug and the iGRiP studs correct insertion into the rubber. You can watch our installation videos on our YouTube channel iGRiPStud:

[Installation Video ST-25R](#) [Installation Video SS-28R](#) [Installation Video SS-32R](#)

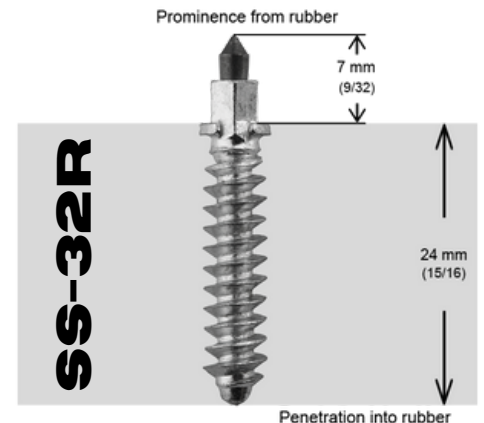
ST-25R



SS-28R

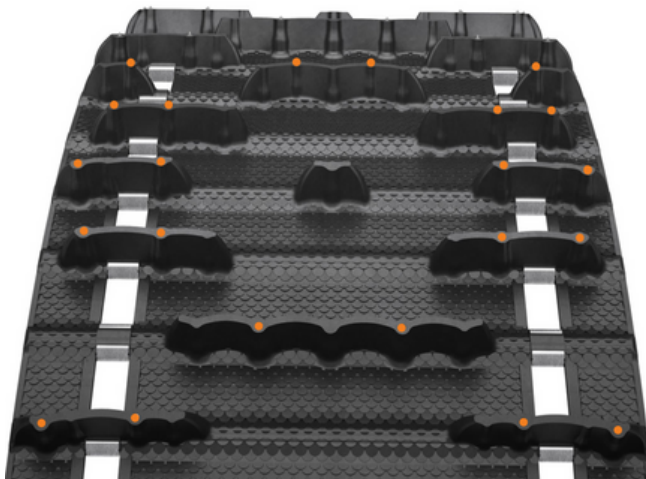


SS-32R



COBRA WT 1.5"

PREDRILLED HOLE / PRÉ-PERÇÉE



- Lug patterns on this track repeat every 6 rows so repeating the exact chosen placement pattern per row is crucial.
- Patterns are only suggestion. Make sure studs are not placed directly in line with the tunnel protectors.
- Installation of tunnel protectors is always recommended

MODEL	LENTGH	WIDTH	LUG	PITCH	ROWS	STUDS
	IN	IN	IN	IN		PCS
9366U	154	20	1.5	2.86	54	198
9414U	154	20	1.5	2.86	54	198

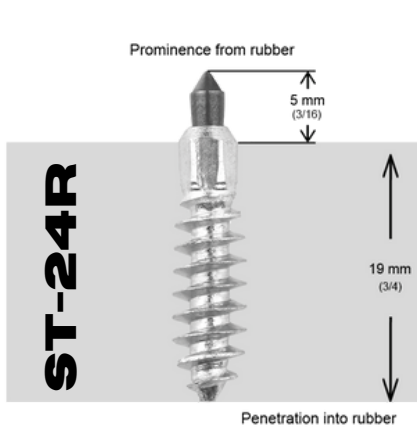
COBRA WT 1.5 - 1.8

For this track, we suggest you use the **ST-24R** [standard], whereas if you prefer a more aggressive stud, the **SS-28R** [soft profile] or the **SS-32R** [firm profile] can be used.

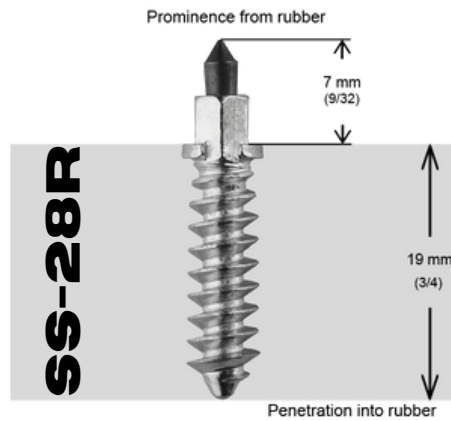
On the images below, the grey zone represents a profiled view of the track lug and the iGRiP studs correct insertion into the rubber. You can watch our installation videos on our YouTube channel iGRiPStud:

[Installation Video ST-24R](#) [Installation Video SS-28R](#) [Installation Video SS-32R](#)

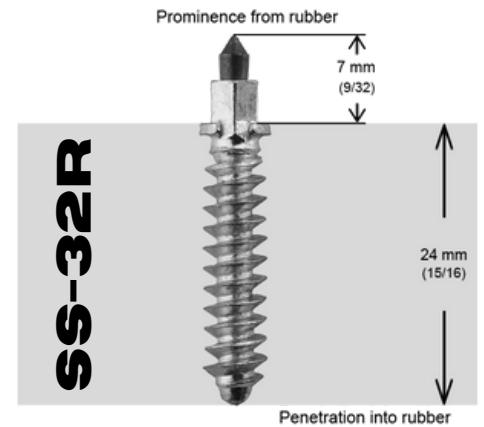
ST-24R



SS-28R



SS-32R



COBRA WT 1.5"



- Pilot drill rubber with 3/32" drill bit x 3/4" deep
- Lug patterns on this track repeat every 3 rows so repeating the exact chosen placement pattern per row is crucial.
- Patterns are only suggestion. Make sure studs are not placed directly in line with the tunnel protectors.
- Installation of tunnel protectors is always recommended

MODEL	LENTGH	WIDTH	LUG	PITCH	ROWS	STUDS
	IN	IN	IN	IN		PCS
9196U	154	20	1.5	2.86	54	198
9322U	154	20	1.5	2.86	54	198
9195U	154	20	1.8	2.86	54	198

COBRA 1.6

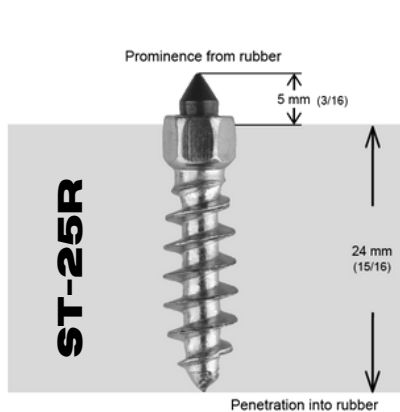
PRE-DRILLED

Seeing as the lugs on this track are pre-drilled, we suggest using the **ST-25R** [standard], whereas if you prefer a more aggressive stud, the **SS-28R** [soft profile] or the **SS-32R** [firm profile] can be used.

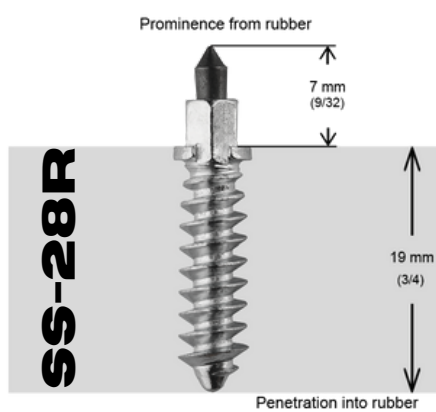
On the images below, the grey zone represents a profiled view of the track lug and the iGRiP studs correct insertion into the rubber. You can watch our installation videos on our YouTube channel iGRiPStud:

[Installation Video ST-25R](#) [Installation Video SS-28R](#) [Installation Video SS-32R](#)

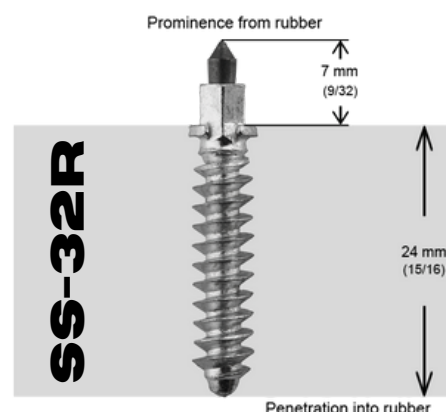
ST-25R



SS-28R



SS-32R

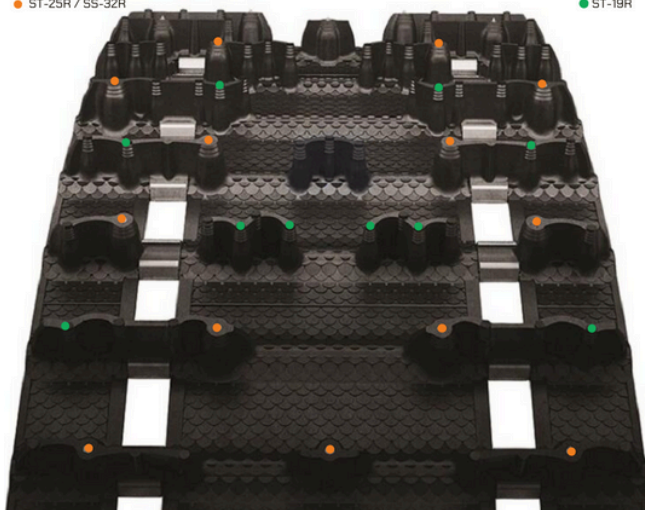


COBRA 1.6"

PREDRILLED HOLE / PRÉ-PERÇÉE

● ST-25R / SS-32R

● ST-19R



- Lug patterns on this track repeat every 6 rows so repeating the exact chosen placement pattern per row is crucial.
- The green spots represent added **ST-19R** studs as a surplus add-on. Pilot drill rubber with 3/32" drill bit x 1/2" deep if you had them.
- Patterns are only suggestion. Make sure studs are not placed directly in line with the tunnel protectors.
- Installation of tunnel protectors is always recommended

MODEL	LENTGH IN	WIDTH IN	LUG IN	PITCH IN	ROWS	STUDS PCS	STUDS +19R ●
9244C	120	15	1.6	2.86	42	91	70
9245C	129	15	1.6	2.86	45	97	75
9246C/9264C	137	15	1.6	2.86	48	104	80
9247C	146	15	1.6	2.86	51	110	85
9249C	137	16	1.6	2.86	48	104	80
9250C	146	16	1.6	2.86	51	110	85
9272C/9282C	154	16	1.6	2.86	54	117	90
9273C	154	15	1.6	2.86	54	117	90
9312C	121	15	1.6	2.52	48	104	80
9313C	128	15	1.6	2.52	51	110	85
9314C	136	15	1.6	2.52	54	117	90
9315C	144	15	1.6	2.52	57	123	95

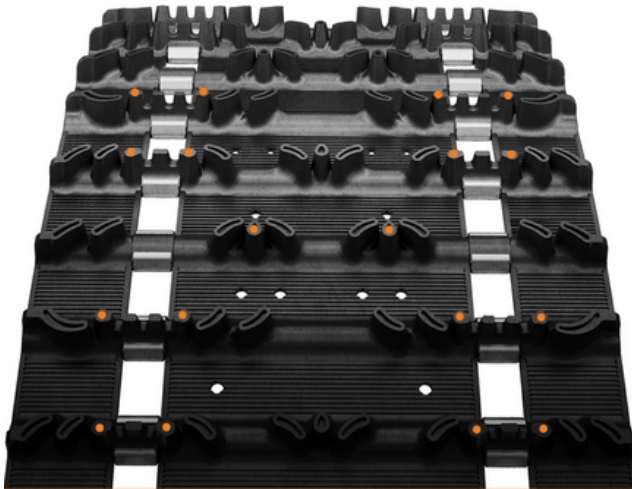
HACKSAW

PRE-DRILLED

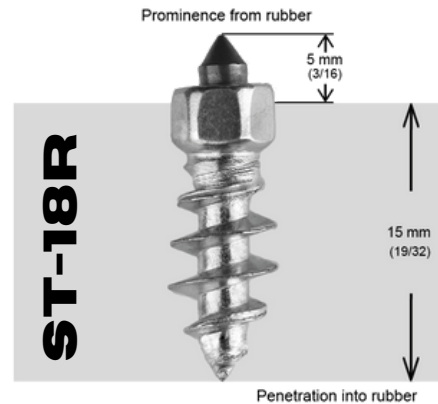
For this track we suggest using the iGRiP **ST-18R** as the lugs on this track are pre-drilled.

For the stud shown below, the grey area represents the lug of the track and the stud must be installed as shown. You can watch our installation video on our YouTube channel iGRiPStud : [Installation Video of iGRiP ST-18R](#)

HACKSAW 1"



ST-18R



- Lug patterns on this track repeat every 3 rows so repeating the exact chosen placement pattern per row is crucial.
- Patterns are only suggestion. Make sure studs are not placed directly in line with the tunnel protectors.
- Installation of tunnel protectors is always recommended

MODEL	LENTGH	WIDTH	LUG	PITCH	ROWS	STUDS
	IN	IN	IN	IN		PATTERN 4-4-2
9010H	136	15	1	2.52	54	180
9043H144	121	15	1	2.52	48	160
9110H	128	14	1	2.52	51	170
9234H	128	15	1	2.52	51	170

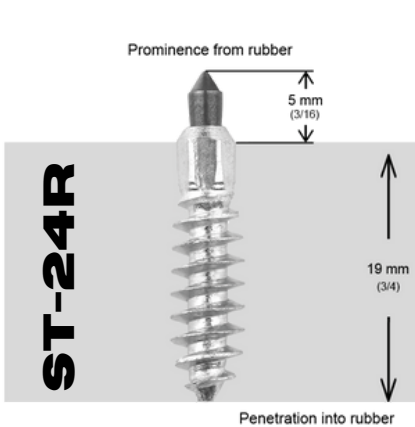
HURRICANE 175

For this track, we suggest you use the **ST-24R** [standard], whereas if you prefer a more aggressive stud, the **SS-28R** [soft profile] or the **SS-32R** [firm profile] can be used.

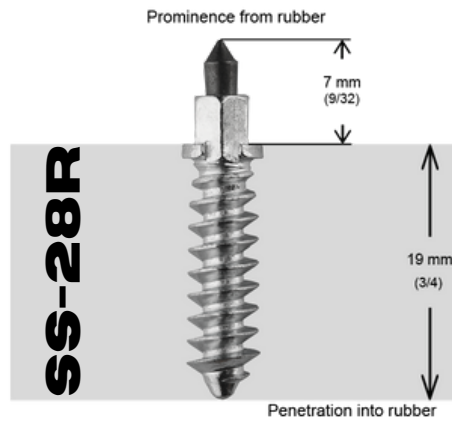
On the images below, the grey zone represents a profiled view of the track lug and the iGRiP studs correct insertion into the rubber. You can watch our installation videos on our YouTube channel iGRiPStud:

[Installation Video ST-24R](#) [Installation Video SS-28R](#) [Installation Video SS-32R](#)

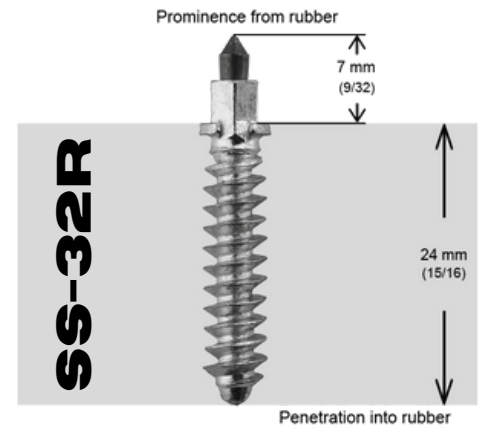
ST-24R



SS-28R



SS-32R



HURRICANE 175



- Pilot drill rubber with 3/32" drill bit x 3/4" deep
- Lug patterns on this track repeat every 6 rows so repeating the exact chosen placement pattern per row is crucial.
- Patterns are only suggestion. Make sure studs are not placed directly in line with the tunnel protectors.
- Installation of tunnel protectors is always recommended

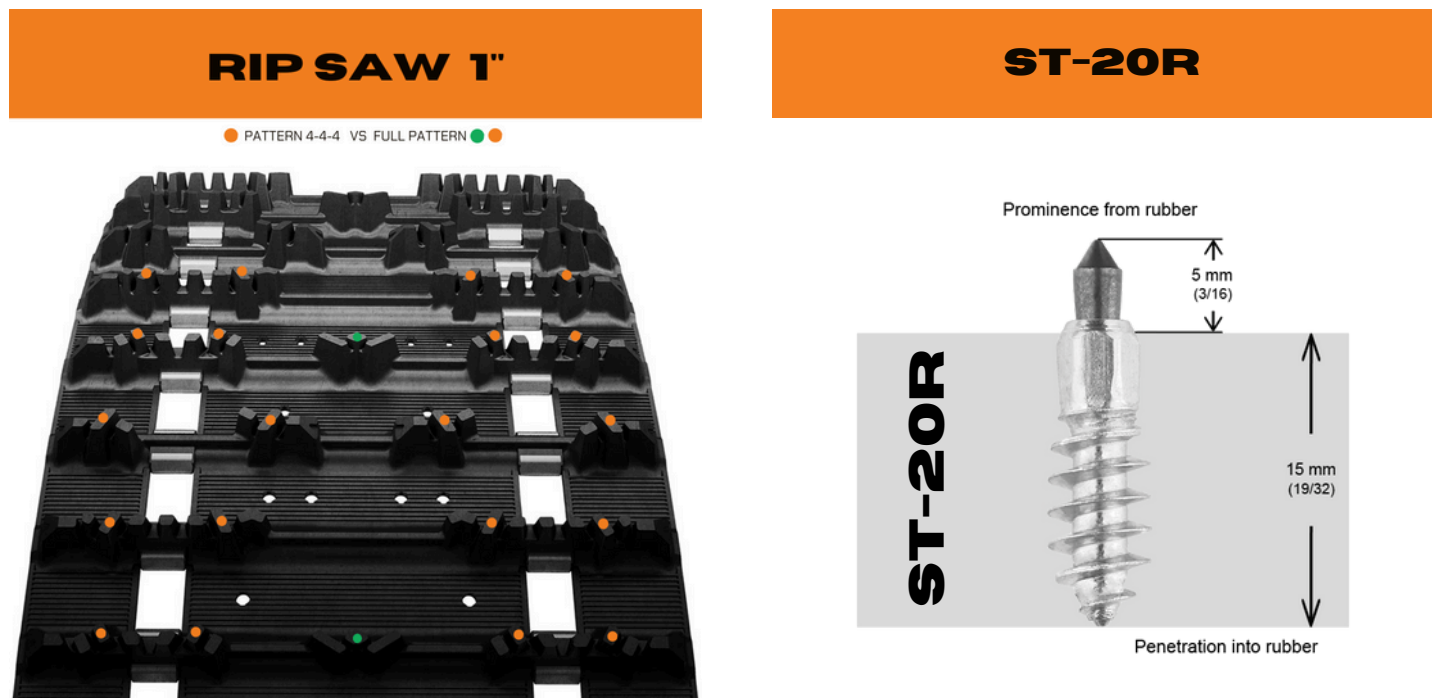
MODEL	LENTGH	WIDTH	LUG	PITCH	ROWS	STUDS
	IN	IN	IN	IN		PATTERN 4-4-4
9400C	120	15	1.75	2.86	42	168
9401C	129	15	1.75	2.86	45	180
9402C	137	15	1.75	2.86	48	192
9403C	146	15	1.75	2.86	51	204

RIPSAW 1"

For this track, we suggest you use the **ST-20R**.

**For Bombardier sleds gen4 and gen5, do not place studs at centre of track if a tunnel protector is installed at front and centre.

For the stud shown below, the grey area represents the lug of the track and the stud must be installed as shown. You can watch our installation video on our YouTube channel iGRiPStud : [Installation Video of iGRiP ST-20R](#)



- Pilot drill rubber with 3/32" drill bit x 5/8" deep
- Lug patterns on this track repeat every 3 rows so repeating the exact chosen placement pattern per row is crucial.
- Patterns are only suggestion. Make sure studs are not placed directly in line with the tunnel protectors.
- Installation of tunnel protectors is always recommended

MODEL	LENTGH	WIDTH	LUG	PITCH	ROWS	STUDS	STUDS
	IN	IN	IN	IN		4-4-4	4-5-4
9148H	120	15	1	2.86	42	168	182

RIPSAW 1.25"

For this track with very solid lugs, we suggest you use the **ST-24R**, whereas if you prefer a more aggressive stud, the **SS-28R**.

**For Bombardier sleds gen4 and gen5, do not place studs at centre of track if a tunnel protector is installed at front and centre.

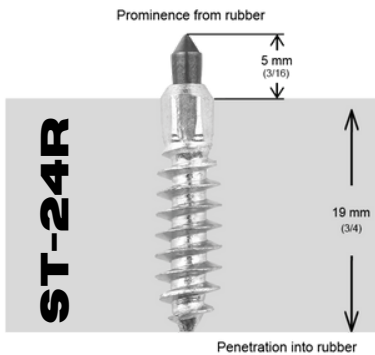
On the images below, the grey zone represents a profiled view of the track lug and the iGRiP studs correct insertion into the rubber. You can watch our installation videos on our YouTube channel iGRiPStud:

[Installation Video ST-24R](#)

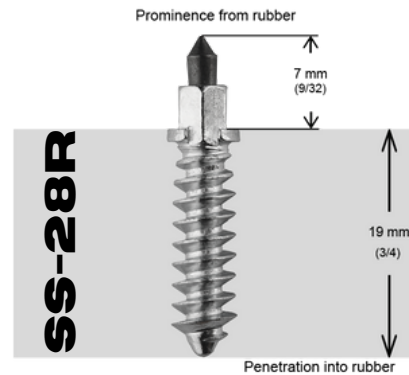
[Installation Video SS-28R](#)



ST-24R

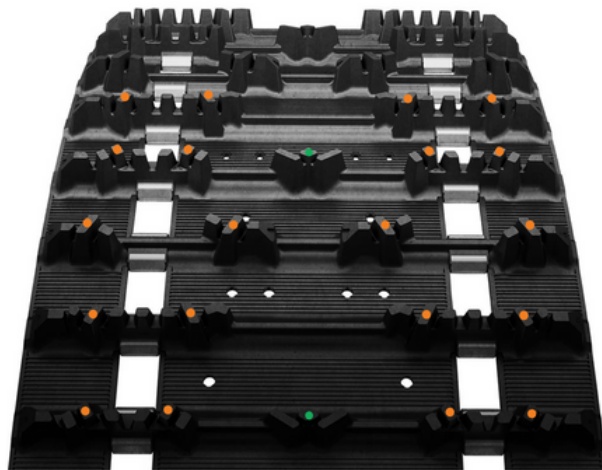


SS-28R



RIPSAW 1.25"

● PATTERN 4-4-4 VS FULL PATTERN ●●



- Pilot drill rubber with 3/32" drill bit x 3/4" deep
- Lug patterns on this track repeat every 3 rows so repeating the exact chosen placement pattern per row is crucial.
- Patterns are only suggestion. Make sure studs are not placed directly in line with the tunnel protectors.
- Installation of tunnel protectors is always recommended

MODEL	LENTGH IN	WIDTH IN	LUG IN	PITCH IN	ROWS	STUDS 4-4-4	STUDS 4-5-4 ●
9001H	128	13.5	1.25	2.52	51	204	221
9006H	144	15	1.25	2.52	57	228	247
9007H	151	15	1.25	2.52	60	240	260
9040H	128	15	1.25	2.52	51	204	221
9149H	120	15	1.25	2.86	42	168	182
9419H	120	15	1.25	2.86	42	168	182
9968H	121	15	1.25	2.52	48	192	208
9968H144	121	15	1.25	2.52	48	192	208
9969H	136	15	1.25	2.52	54	216	234

RIPSAW II 1"-1.25"

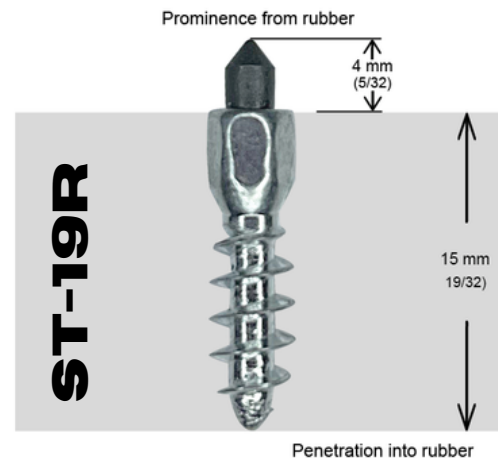
This track is equipped with narrower and more flexible lugs.

For this track we suggest using the iGRiP **ST-19R** which is specifically designed for the narrower lugs.

For the stud shown below, the grey area represents the lug of the track and the stud must be installed as shown. You can watch our installation video on our YouTube channel iGRiPStud : [Installation Video of iGRiP ST-19R](#)

RIPSAW II 1"-1.25"

ST-19R



- Pilot drill rubber with 3/32" drill bit x 1/2" deep
- The lug pattern repeats every 3 rows, so it is important to repeat the stud pattern every 3 rows.
- Make sure studs are not placed directly in line with tunnel protectors.
- Installation of tunnel protectors is always recommended.
- While doing routine maintenance, verify that the studs are consistently at the right depth. If not, screw in deeper until just right.

MODEL	LENTGH IN	WIDTH IN	LUG IN	PITCH IN	ROWS	STUDS	
						PATTERN 4-6-4	FULL PATTERN ●
9158H	120	15	1	2.86	42	196	252
9209H	120	15	1.25	2.86	42	196	252
9214H	121	15	1.25	2.52	48	224	288
9215H	128	15	1.25	2.52	51	238	306
9216H	136	15	1.25	2.52	54	252	324
9223H	137	15	1.25	2.86	48	224	288
9224H	137	15	1	2.86	48	224	288
9237H	129	1.25	1.25	2.86	45	210	270
9325H	129	15	1	2.86	45	210	270

RIPSAW II 1.5"

This track is equipped with narrower and more flexible lugs.

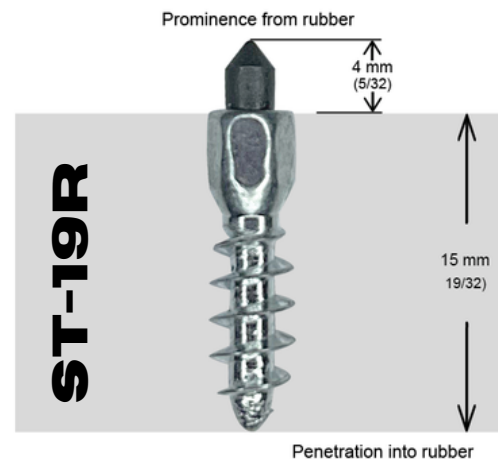
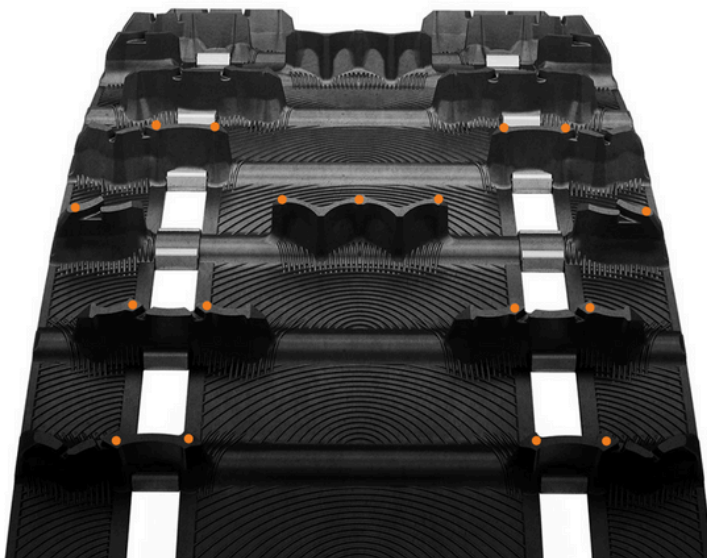
For this track we suggest using the iGRiP **ST-19R** which is specifically designed for the narrower lugs.

For the stud shown below, the grey area represents the lug of the track and the stud must be installed as shown. You can watch our installation video on our YouTube channel iGRiPStud : [Installation Video of iGRiP ST-19R](#)

RIPSAW II 1.5"

PATTERN 4-5-4

ST-19R



- Pilot drill rubber with 3/32" drill bit x 1/2" deep
- The lug pattern repeats every 3 rows, so it is important to repeat the stud pattern every 3 rows.
- Make sure studs are not placed directly in line with tunnel protectors.
- Installation of tunnel protectors is always recommended.
- While doing routine maintenance, verify that the studs are consistently at the right depth. If not, screw in deeper until just right.

MODEL	LENGTH	WIDTH	LUG	PITCH	ROWS	STUDS
	IN	IN	IN	IN		PCS
9304C	120	15	1.5	2.86	42	182
9305C	129	15	1.5	2.86	45	195
9306C	137	15	1.5	2.86	48	208

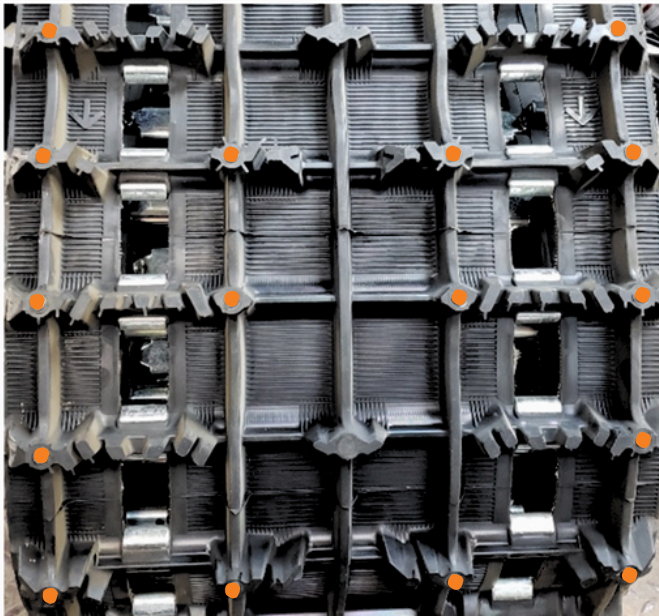
SILENT DRIVE II 1.25"

For this track we suggest using the iGRiP **ST-18R** as this track is pre-drilled.

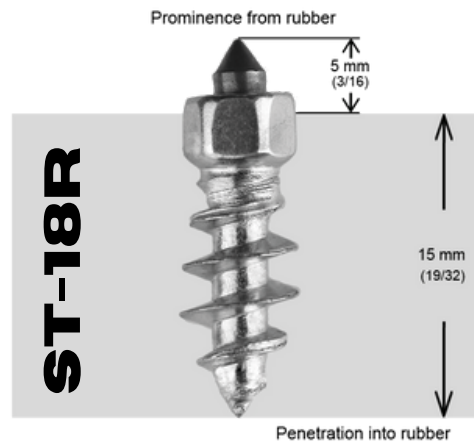
**For Bombardier sleds gen4 and gen5, do not place studs at centre of track if a tunnel protector is installed at front and centre.

For the stud shown below, the grey area represents the lug of the track and the stud must be installed as shown. You can watch our installation video on our YouTube channel iGRiPStud : [Installation Video of iGRiP ST-18R](#)

SILENT DRIVE II 1.25"



ST-18R



- Lug patterns on this track repeat every 3 rows so repeating the exact chosen placement pattern per row is crucial.
- Patterns are only suggestion. Make sure studs are not placed directly in line with the tunnel protectors.
- Installation of tunnel protectors is always recommended

MODEL	LENTGH	WIDTH	LUG	PITCH	ROWS	STUDS
	IN	IN	IN	IN		PATTERN 2-4-4
SILENT DRIVE II	137	15	1.25	2.86	48	160

STORM 150

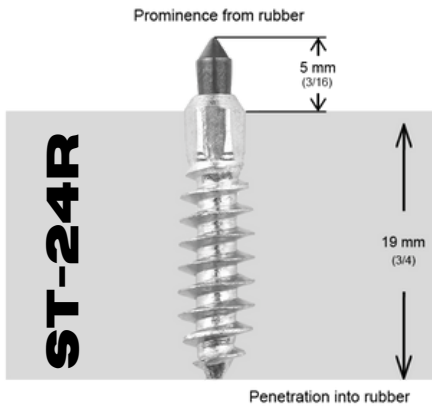
This track is particular as it has lugs of 2 different heights. The centre lugs are 1.5" and those in the edge of the track are 1.25". We suggest you use the **ST-24R**, whereas if you prefer a more aggressive stud, the **SS-28R**.

On the images below, the grey zone represents a profiled view of the track lug and the iGRiP studs correct insertion into the rubber. You can watch our installation videos on our YouTube channel iGRiPStud:

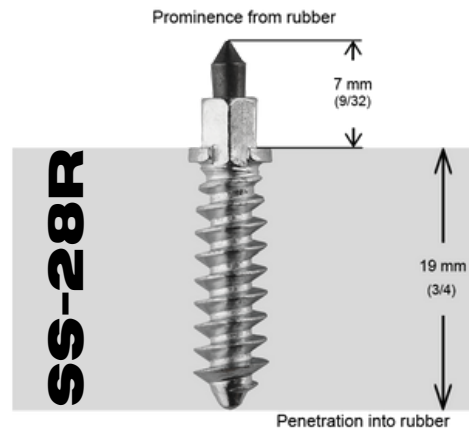
[Installation Video ST-24R](#)

[Installation Video SS-28R](#)

ST-24R



SS-28R



STORM 150

● PATTERN 4-2-3 VS PATTERN 7-4-4 ●



- Pilot drill rubber with 3/32" drill bit x 3/4" deep
- Lug patterns on this track repeat every 3 rows so repeating the exact chosen placement pattern per row is crucial.
- Patterns are only suggestion. Make sure studs are not placed directly in line with the tunnel protectors.
- Installation of tunnel protectors is always recommended

MODEL	LENTGH	WIDTH	LUG	PITCH	ROWS	STUDS	STUDS
	IN	IN	IN	IN		PATTERN 4-2-3	PATTERN 7-4-4 ●
9368H	120	15	1.5	2.86	42	126	210
9369H	129	15	1.5	2.86	45	135	225
9370H	137	15	1.5	2.86	48	144	240
9371H	146	15	1.5	2.86	51	153	255