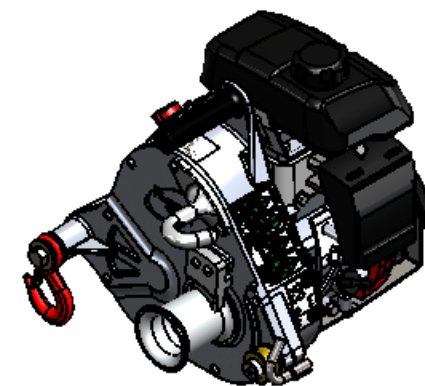
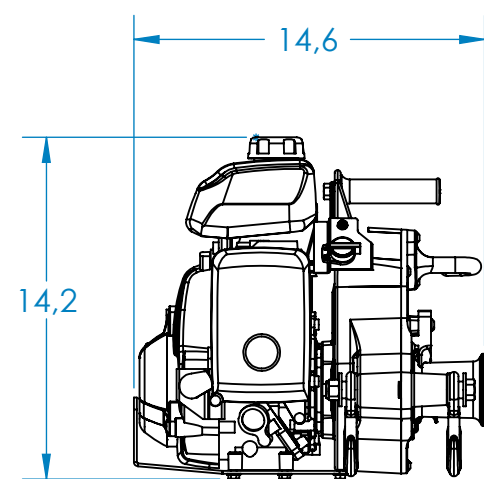
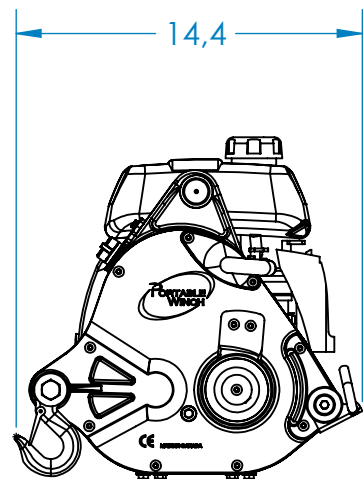


ITEM No.	PART NUMBER	DESCRIPTION	QTY	ITEM No.	PART NUMBER	DESCRIPTION	QTY
1	31-0025	BHCS 1/4"-20 X 3/4" STAINLESS STEEL	6	22	43-0005	KEY FOR INPUT PINION (3/16 X 1/8 X 3/4)	1
2	31-0010	HCS 1/2-13 X 6 - GR5 - ZN	1	23	10-0086	INPUT PINION	1
3	35-0004	FLAT WASHER 1/2 - ZN	4	24	35-0006	FLAT WASHER 1/4 - ZN	1
4	10-0098	BUSHING FOR SAFETY HOOK	2	25	31-0023	BHCS 1/4-28 X 1/2 - ZN	1
5	PCA-1281	SAFETY HOOK 3/4 TON	2	26	10-0095	GUARD PLATE PCW5000	1
6	10-0099	ALUMINIUM ROPE EXIT HOOK	1	27	44-0020	LABEL - PCW5000 SERIAL No. & WARNING	1
7	10-0093	THRUST WASHER 3/4 X 1-1/4 X 0.170	1	28	44-0023	LABEL - DECIBEL WARNING 93dB	1
8	70-0011	HIGH SPEED SHAFT ASSEMBLY - 97 TEETH	1	29	32-0002	FLANGE BOLT SERRATED M6-1 x 12mm - ZP	6
9	70-0012	INTERMEDIATE SPEED SHAFT ASSY. - 78 TEETH	1	30	35-0001	INTERNAL TOOTH LOCK WASHER TYPE-A 1/4 - ZN	4
10	70-0013	LOW SPEED SHAFT ASSEMBLY - 65 TEETH	1	31	43-0013	KEY FOR CAPSTAN DRUMS 57-85mm (5/16x1-1/4)	1
11	44-0019	VINYL GRIP	1	32	10-0085	GEARBOX COVER	1
12	31-0022	HCS 1/4-28 X 1-1/4 - ZN	4	33	39-0008	OIL PLUG 3/8 - ZN	1
13	10-0094	WINCH HANDLE	1	34	31-0024	BHCS 1/4-20 X 1 - SS	6
14	10-0084	GEARBOX HOUSING	1	35	43-0004	RADIAL SHAFT SEAL 30 X 42 X 7 - CRWA1	1
15	44-0027	LABEL - ROPE INSTALLATION PCW5000	1	36	10-0103	ROPE KEEPER	1
R11 16	10-0324	HONDA SWITCH MOUNT SPACER	1	37	10-0101	ROPE ENTRY PULLEY	1
R11 17	70-0023	ON/OFF SWITCH WITH SUPPORT PLATE	1	38	10-0119	SHOULDER BOLT 5/8 X 1 1/2 - ZN	1
18	39-0042	TAPPING SCREW - TYPE AB-#10x5/8	1	39	10-0100	ROPE GUIDE FOR CAPSTAN DRUM 57mm	1
19	31-0019	HCS 3/8"-24 X 1" Gr5 - ZP	1	40	10-0096	CAPSTAN DRUM 57mm	1
20	33-0005	NUT 1/2-13 NYLON - ZN	1	41	10-0102	RETAINING WASHER (1/4 X 1-1/4 OD) - ZN	1
21	45-0000	HONDA ENGINE GXH50U-QXA	1				

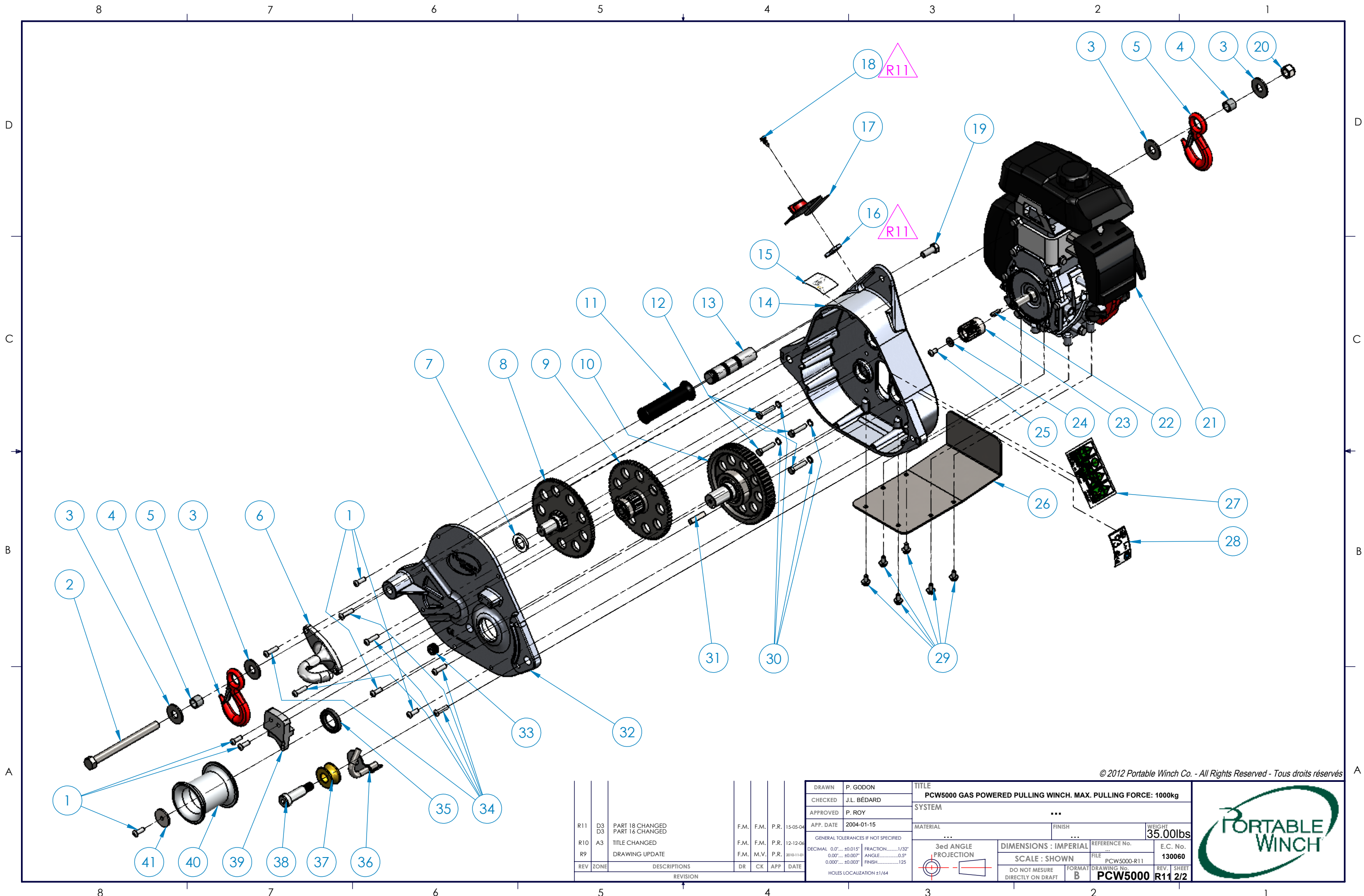


© 2012 Portable Winch Co. - All Rights Reserved - Tous droits réservés

REV	ZONE	DESCRIPTIONS	DR	CK	APP	DATE
R11	D3	PART 18 CHANGED PART 16 CHANGED	F.M.	F.M.	P.R.	15-05-04
R10	A3	TITLE CHANGED	F.M.	F.M.	P.R.	12-12-06
R9		DRAWING UPDATE	F.M.	M.V.	P.R.	2010-11-01

DRAWN	P. GODON	TITLE	PCW5000 GAS POWERED PULLING WINCH. MAX. PULLING FORCE: 1000kg
CHECKED	J.L. BÉDARD	SYSTEM	SYSTEM
APPROVED	P. ROY	MATERIAL	...
APP. DATE	2004-01-15	FINISH	...
GENERAL TOLERANCES IF NOT SPECIFIED		WEIGHT	35.00lbs
DECIMAL	0.01" ±0.015"	FRACTION	1/32"
ANGLE	0.005° ±0.005°	FINISH	125
DIMENSIONS : IMPERIAL		REFERENCE No.	130060
SCALE : SHOWN		FILE	PCW5000-R11
DO NOT MEASURE DIRECTLY ON DRAFT		FORMAT	B
Holes Localization ±1/64		DRAWING No.	PCW5000
3rd ANGLE PROJECTION		REV.	R11
		SHEET	1/2





© 2012 Portable Winch Co. - All Rights Reserved - Tous droits réservés

REV	ZONE	DESCRIPTIONS	DR	CK	APP	DATE
R11	D3	PART 18 CHANGED PART 16 CHANGED				15-05-04
R10	A3	TITLE CHANGED				12-12-06
R9		DRAWING UPDATE				2010-11-01

DRAWN	P. GODON	TITLE	PCW5000 GAS POWERED PULLING WINCH. MAX. PULLING FORCE: 1000kg	
CHECKED	J.L. BÉDARD	SYSTEM	...	
APPROVED	P. ROY	MATERIAL	...	
APP. DATE	2004-01-15	FINISH	...	
GENERAL TOLERANCES IF NOT SPECIFIED		WEIGHT	35.00lbs	
DECIMAL	0.0" ... ±0.015"	FRACTION	1/32"	
F.M.	0.00" ... ±0.007"	ANGLE	0.5°	
F.M.	0.000" ... ±0.003"	FINISH	125	
HOLES LOCALIZATION ±1/64		3rd ANGLE PROJECTION		
		DIMENSIONS : IMPERIAL	REFERENCE No.	E.C. No.
		SCALE : SHOWN	FILE	130060
		DO NOT MEASURE DIRECTLY ON DRAFT	PCW5000-R11	REV. SHEET
		FORMAT B	PCW5000	R11 2/2

